

THE SIMPLICITY OF COMPACT PLUG-AND-PAN IMAGING



Meet your imaging needs—today and tomorrow

The award-winning CS 8100 family delivers advanced imaging technology in an extremely compact and simple system. Positioning is easier, image acquisition is faster and higher image quality is more accessible. Easy to install, learn and use, the CS 8100 is the perfect unit for everyday general practices as well as orthodontic needs—thanks to a cephalometric imaging option.



ULTRA-COMPACT AND OPEN

Slim and elegant, the CS 8100 fits easily into tight spaces. It features an open design that is built for comfort and easy patient positioning.



UPGRADABLE TO CEPH AND 3D

Whether you need to add cephalometric or CBCT imaging capabilities, the CS 8100 and our imaging software can easily evolve with your practice needs.

"The CS 8100 does more than my old machine and is half the size! With the CS 8100, capturing a panoramic image has never been easier."

**DR. BARTLEY LABINER,
LABINER ORAL SURGERY,
BRONX, NY, USA**

SMALL, YET POWERFUL

Featuring state-of-the-art digital technologies and software processing, the CS 8100 produces clear and sharp images in seconds. The innovative CS Adapt module enables you to enhance image quality and customize the look and feel according to your diagnostic needs. Despite its compact design, the CS 8100 easily accommodates patients of all sizes and physical abilities with both sitting and standing imaging options available.

Discover the imaging solution of choice for more than 12,000 practices. Whether you are transitioning to digital or looking to upgrade your existing digital unit, the CS 8100 will meet and exceed your imaging expectations.

HIGH-QUALITY IMAGES— EFFORTLESSLY

Featuring the latest imaging technologies and CS Adapt image processing, the CS 8100 produces clear and sharp images that are ready for review almost immediately.

SMARTER DESIGN

Smart, face-to-face positioning accessories facilitate proper patient placement and increase accuracy.

SIMPLE AND FAST OPERATIONS

Intuitive user interface, pre-set programs and step-by-step instructions minimize set-up time and errors.

PERFECT FOR EVERYDAY NEEDS

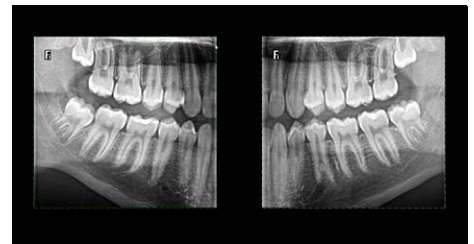
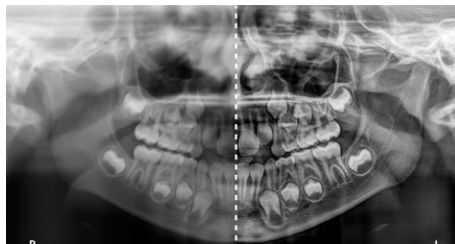
From standard panoramic images to segmented bitewing, TMJ, and maxillary sinus images, the CS 8100 covers all of your everyday .

RELIABLE POSITIONING

A thicker focal trough eliminates the need for laser beams and facilitates proper positioning, increasing image accuracy and reducing risk of retakes.

INTUITIVE AND POWERFUL SOFTWARE

Our easy-to-use and integrated software solutions provide powerful features to enhance diagnosis, treatment planning and patient communication.



CS 8100 FAMILY

© Carestream Health, Inc. 2017.
16414 AL SS 1017

carestreamdental.com

800.944.6365