

# RELEASE THE POWER OF 3D



## Step into digital dentistry

Carestream Dental's most successful 3D unit—the CS 8100 3D—is now available with an optional cephalometric imaging module. A multi-functional, 4-in-1 imaging solution, the CS 8100 3D family blends award-winning 2D panoramic technology, powerful CBCT imaging, and 3D model scanning with optional cephalometric scanning capabilities. As a result, you gain access to the tools you need to build your practice through a single imaging system that covers virtually all of your everyday imaging needs.



### ULTRA-COMPACT DESIGN

*Slim and elegant, the CS 8100 3D fits practically anywhere. With or without cephalometric arm, the CS 8100 3D is one of the smallest units in its category, featuring an open design that is built for comfort and positioning flexibility.*



### MULTI-FUNCTIONAL SYSTEM

*In addition to diagnostic imaging, the CS 8100 3D allows you to obtain precise digital 3D models for optional applications, including orthodontics, implant planning or CAD/CAM restorations.*

*"You don't know how important a 3D system is to your practice until you have it."*

DR. DAVID GOTEINER,  
CHESTER, NJ

# ONE SYSTEM. THREE TECHNOLOGIES. MORE POSSIBILITIES.

Whether you are a general dentist or a specialist, the CS 8100 3D is amazingly versatile, enabling you to perform more procedures in your own practice. From two-dimensional panoramic to 3D imaging, the system covers an array of routine examinations, as well as advanced procedures.

Along with its many imaging capabilities, the CS 8100 3D delivers precise, high-resolution images with each and every use—making it an ideal choice for most practices. In short, there's no better way to move to 3D.

## AWARD-WINNING 2D TECHNOLOGY

*The CS 8100 3D delivers outstanding panoramic images for routine diagnostic needs, including segmented bitewing exams.*

## SIMPLE, ELEGANT DESIGN

*A simplified workflow, face-to-face positioning and an innovative 3D bite block make image capture quick and simple in four steps.*

## SELECTABLE FIELDS OF VIEW

*With four 3D fields of view—ranging from 4 cm x 4 cm to 8 cm x 9 cm—you can obtain the ideal image for each individual exam, at the lowest dose.*

## LOW-DOSE IMAGING

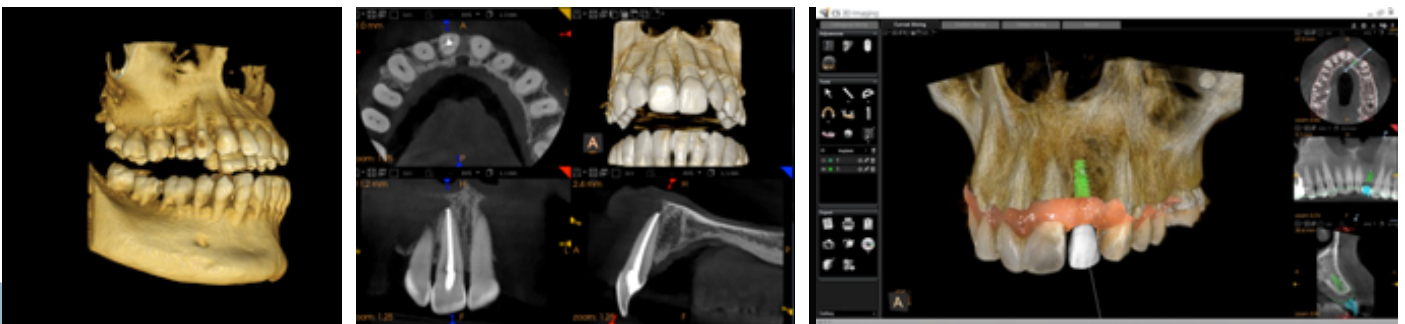
*Low-dose mode enables you to obtain high-quality 3D images at the same or lower dose as a standard panoramic exam.*

## HIGH-RESOLUTION 3D IMAGES

*EndoHD mode delivers extremely high resolution images (up to 75  $\mu$ m), perfectly suited for endodontic indications.*

## INTUITIVE AND POWERFUL SOFTWARE

*Easy-to-use software solutions provide powerful features for a variety of applications, including implants, orthodontics, oral surgeries and endodontics.*



## CS 8100 3D FAMILY

© Carestream Health, Inc. 2017.  
16415 AL CS 8100 3D Family SS 1017

[carestreamdental.com](http://carestreamdental.com)

800.944.6365